

Seoul's parks for you and me Etiquette for everyone

- Protect the precious grass, plants, monuments, and facilities
- Keep the park facilities clean
- Do not bring food or cook
- Refrain from smoking, drinking, and making too much noise
- Refrain from riding bicycles, scooters, etc. for safety
- Keep your pets on a leash and clean up after them

World Cup Park

Location 243-60, World Cup-ro, Mapo-gu, Seoul

Hours Always open (Limited access to Haneul Park and Noeul Park at night / Except for Noeul Campground)

Inquiries Seoul Seobu Parks And Recreation Center +82-2-300-5501

Transportation Information

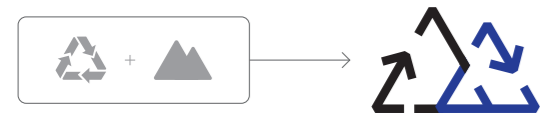
Subway / Exit 1 of World Cup Stadium Station - Line 6 (About 10 minutes on foot)

Parking Information Hours 9:00 a.m. -10:00 p.m. (Free parking after 10:00 p.m.)

Parking Lots	Capacity	Address
Pyeonghwa Park Parking Lot	1162 paces	531, Seongsan-dong, Mapo-gu
Nanjicheon Park Parking Lot	438 paces	1538-24, Sangam-dong, Mapo-gu
Nanjicheon Park (Samgeori) Parking Lot	59 paces	1538, Sangam-dong, Mapo-gu
Noeul Park Parking Lot	162 paces	481-6, Sangam-dong, Mapo-gu
Nanjjungang-ro Street Parking	113 paces	481-94, Sangam-dong, Mapo-gu

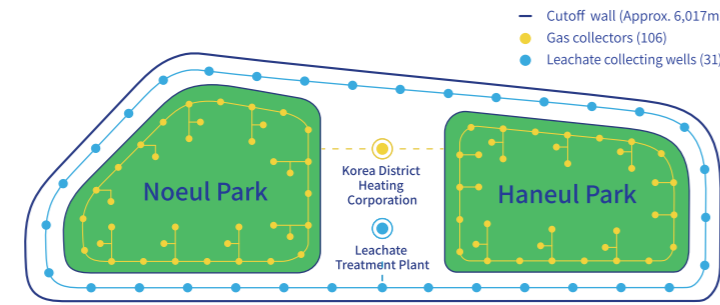
Becoming a green park again

The regeneration park logo, a combination of two different logos symbolizing regeneration and forest, represents an eco-friendly ecological park created by regenerating a space that is not used anymore. The World Cup Park is a place that connects the past and present and provides citizens with a rest area where both the city and a forest coexist.

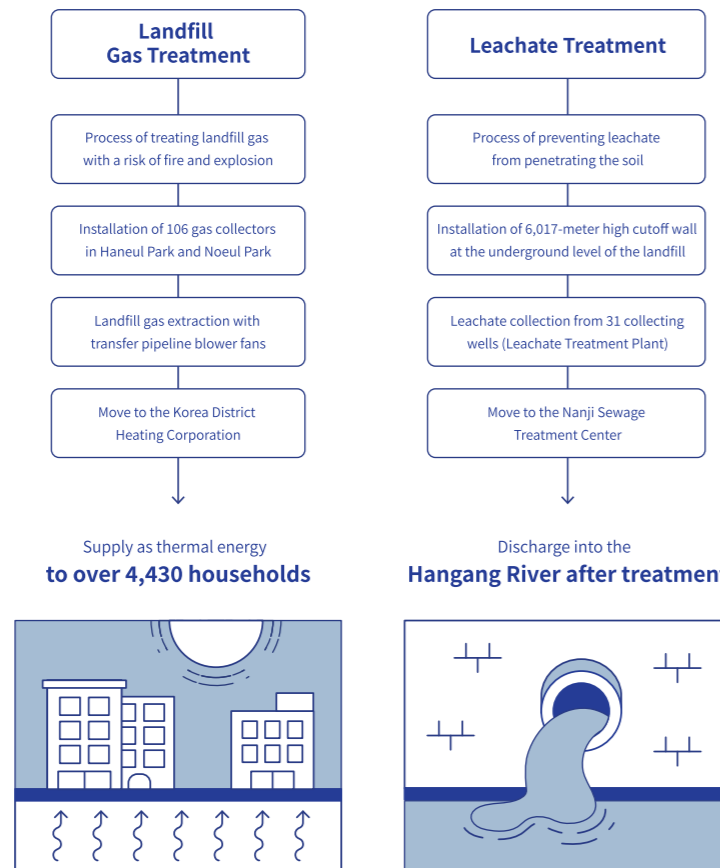


Seoul Parks | parks.seoul.go.kr

From a barren landfill site to an island of life again Reforestation Process



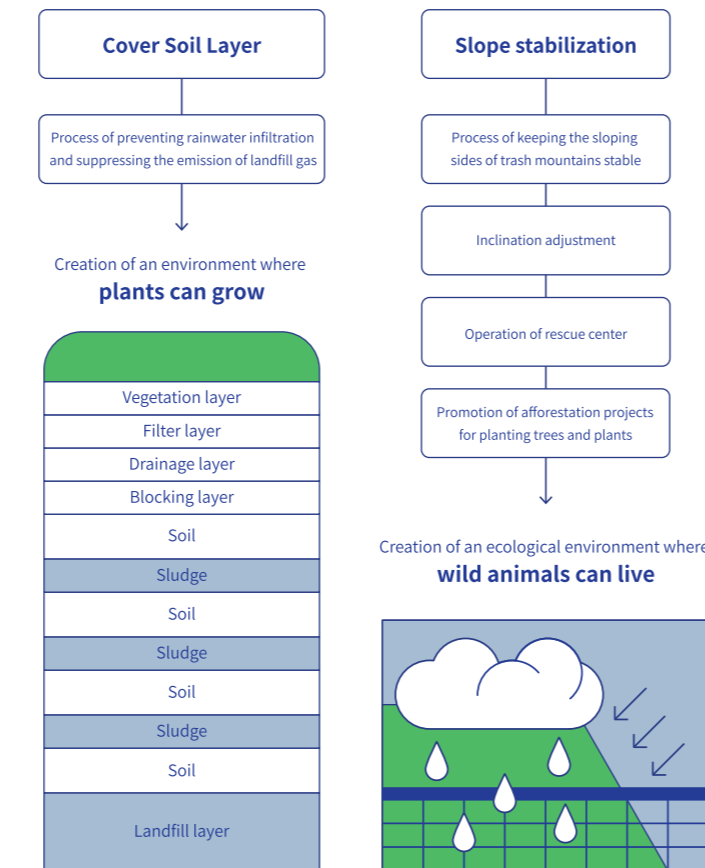
<Leachate and Landfill Gas Treatment System>



World Cup Park

Dream stadium using green energy

The World Cup Park was created on an island called Nanjido Island located on the Hangang River. Nanjido Island had been an ecological repository rich in clean water and feed. However, over the 15 years since 1978, as 92 million tons of municipal waste from Seoul was dumped on the island, it turned into the world's tallest garbage mountain, a barren land filled with leachate, odor, and flies. In order to revive Nanjido, a stabilization project was begun in 1996 to transform it into the World Cup Park that opened with four names in May 2002. The island is still being restored, transforming to a land of life where various animals and plants can live again.



Pyeonghwa Park

A park where nature and people become one

Created in commemoration of the 2002 World Cup, this park represents the entire World Cup Park as a symbol of global unity and peace. Visitors can enjoy relaxation and leisure activities in its future-oriented open plaza and eco-friendly places such as Nanji Pond, Pyeonghwa Garden, and picnic area.
Nanji Pond / Pyeonghwa Grass Plaza / Seoul Energy Dream Center / Seoul Garden Show

Haneul Park

A park where the sky and grasslands meet

This park is closest to the sky of all the other parks in the World Cup Park, exhibiting the striking change of a barren landfill site into a nature-friendly park. The park presents a spectacular view of a silver grass field in autumn and a full view of Seoul including Bukhansan Mountain and the Hangang River.
Bowl that Embraces the Sky / Silver Grass Field / Haneul Observatory / Metasequoia Path

Noeul Park

A park with a beautiful view of the sunset

With various sculptures and observation decks on a wide lawn, the park attracts many citizens who want to relax in nature. It is also equipped with various facilities to experience nature up close such as the park golf course, family campground, Noeul Library, Silkworm Experience Center, habitat of fireflies, Urban Farm, and more.
Noeul Campground / Sculpture Park / Park Golf Course / Noeul Leisure Center

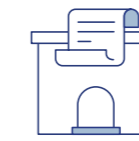
Nanjicheon Park

A park reborn as a natural stream

This is a stream flowing through the northern end of Nanjido Island to the Hangang River. Through a restoration project, this stream, which was once full of pollutants, was reborn as a clean stream inhabited by a variety of aquatic plants, such as willow trees and silver grass, and visited by various fish and birds.
Nanji Grass Plaza / Forest Experience Center for Infants / Duck Pond / Nanjigyo Bridge

Education and Experience

Places for education and ecological experiences where visitors can learn and observe the ecosystem of the World Cup Park



Hall of the Nanjido Island Story
This hall introduces the story of the World Cup Park, which has been reborn as an eco-friendly ecological park from Nanjido Island, an abandoned island.
/ Pyeonghwa Park



Firefly Ecological Center
This center provides ecological information about fireflies and an opportunity to observe them during the period when imago develop their wings.
/ Noeul Park



Silkworm Experience Center
The center invites visitors to observe the growth of silkworms and experience reeling silk off cocoons.
/ Noeul Park



Noeul Byeolnuri (Astronomical education center)
The center functions as an astronomical library during the day and a small astronomical observatory where visitors can observe various constellations and planets at night.
/ Noeul Park



Noeul Eco Center
This is a space where visitors can participate in various leisure programs, such as cooking and crafting, using the park's natural resources.
/ Noeul Park



World Cup Park Forest Experience Center for Infants
This center provides education for infants to help them achieve emotional development and growth while experiencing the various functions of a forest
/ Nanjicheon Park



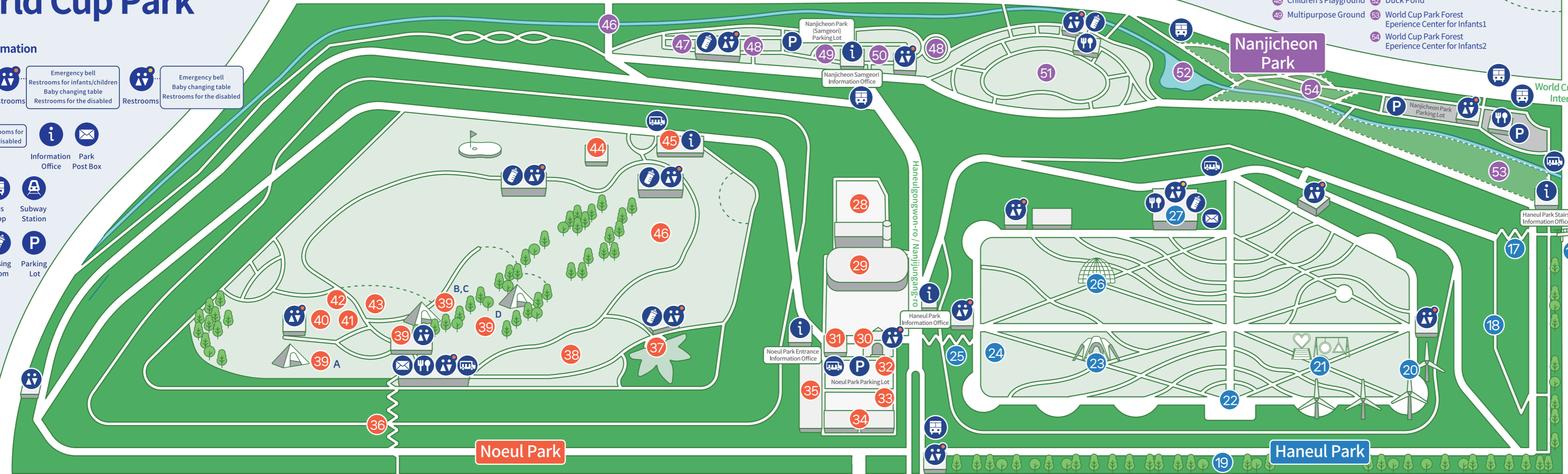
World Cup Park

Park Information

- Management Office
- Restrooms
 - Emergency bell
 - Restrooms for infants/children
 - Baby changing table
 - Restrooms for the disabled
- Restrooms for the disabled
- Information Office
- Park Post Box
- Electric Shuttle Car
- Bus Stop
- Subway Station
- Convenience Store
- Nursing Room
- Parking Lot

Guryong Intersection

Seobu Driver's License Examination Office



- 46 Nanjigyo Bridge 1
- 47 Futsal Field
- 48 Children's Playground
- 49 Multipurpose Ground
- 50 Artificial lawn
- 51 Nanji Grass Plaza
- 52 Duck Pond
- 53 World Cup Park Forest Experience Center for Infants1
- 54 World Cup Park Forest Experience Center for Infants2

World Cup Stadium Intersection

Mapo-gu Office



Gayangdaegyo Bridge

- 28 Korea District Heating Corporation
- 29 Mapo Resource Recovery Facility
- 30 Noeul Eco Center
- 31 Firefly Ecological Center
- 32 Seoul Mountain Climbing & Culture Center
- 33 Nanji Art & Creativity Studio
- 34 Sangam Hydrogen Station
- 35 Noeul Fuel Cell
- 36 Noeul Stairs
- 37 Plaza of Wind
- 38 Noeul Dog Campground
- 39 Noeul Campground / Management Office
- 40 Natural Water Playground
- 41 Silkworm Experience Center
- 42 Urban Farm
- 43 Park Golf Course
- 44 Noeul Byeolnuri / Information Office
- 45 Sculpture Park

Nanji Hangang Park

- 16 World Cup Park Overpass
- 17 East Haneul Park Stairs
- 18 Forest Trail of Hope
- 19 Metasequoia Path
- 20 Wind Power Generator
- 21 Eou Sae Swing, Heart Stairs
- 22 Haneul Observatory
- 23 Mountain / Haneul Gate
- 24 Naturalized Plant Garden
- 25 West Haneul Park Stairs
- 26 Rock of Wishing
- 27 Tourist Information Center

Direction of World Cup Bridge (under construction)

- 1 Pyeonghwa Grass Plaza
- 2 Seoul Energy Dream Center
- 3 Sopoong Wedding Hall
- 4 Park Kindergarten
- 5 Adventure Playground
- 6 Tennis Court
- 7 Seoul Seobu Parks And Recreation Center (Nanji Story Hall)
- 8 Nanji Beach
- 9 Nanji Pond
- 10 UNICEF Plaza
- 11 Pyeonghwa Plaza
- 12 Solar Square / Floor Fountain
- 13 Solar Panel Power Generator
- 14 Pet Playground
- 15 Nanji Sewage Treatment Center (pump station)